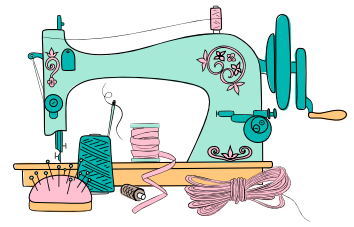




SEWING MAKER INTERNATIONAL



**AS A GLOBAL
LEADER IN THE FIELD OF
SEWING MACHINES.**

**Sewing Machine International is to Combine the best in with
specialized inventing capabilities.**

COMAPNY'S PROFILE

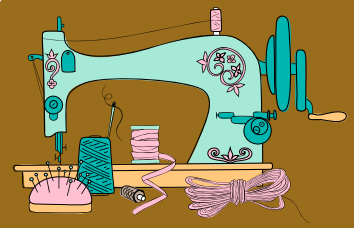
Sewing Maker International is dedicatedly supporting the garments and textile industry with its impeccable gamut of Sewing Machine & Parts, Home sewing machine, Industrial sewing machine, Overlock machine, Cutting machine, Embroidery & Garment Machinery. The parent company Sewing Maker International was founded in 2004 by our founder Mr. Deepak Malhotra. As a trader and supplier, we are attaining tremendous growth due to sourcing and offering products of international quality standards abundance. Our range of steam press, power saving motors and embroidery & garment machines is widely acclaimed of their brilliant performance, longer working life, simple operations and innovative designs. Apart from offering outstanding quality products, we are rendering Annual Maintenance Services of Sewing Machines as a service provider. To render reliable services, our company is greatly backed by sincere personnel, who hold rich technical and trouble-shooting knowledge of the sewing machines. For making our clients have excellent sewing results, these personnel periodically check their machines.

Our company is walking on the clouds of enviable growth & success, under the leadership of Mr. Deepak Malhotra. Utilizing his years of industry experience and detailed market knowledge, he periodically guides & motivates personnel so as to take firm to the heights of success. His charismatic leadership qualities, fascinating trade decisions and fair trade practices have enabled us to win hearts of a large number of customers, across the market.

E-Mail: sales@swingo.in

Address: St No.6, Oswal Industrial complex, Giaspura, Ludhiana-10,

Mobile: +91-781402-25000 | +91-98722-11322



SEWING MACHINE

- CLOSED OR OPEN TYPE SHUTTLE RACE.
- FEED DROP SYSTEM FOR A QUICK CHANGE TO EMBROIDERY.
- SHEET METAL BOBBIN WINDER / CAST IRON BOBBIN WINDER.
- FOOT OPERATING SHEET METAL STAND / CAST IRON STAND WITH WOODEN TABLE.
- PLASTIC BASE & COVER.
- WOODEN BASE ONLY.
- HAND ATTACHMENT.
- SEWING MACHINE MOTOR WITH FOOT PEDAL / CONTROLLER (100W & 6000 R.P.M).
- 1500 STITCHES PER MINUTE 6 TO 30 STITCHES PER 25MM.



BAG CLOSER MACHINE

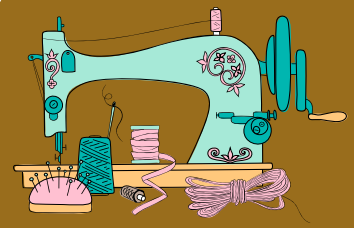
- SINGLE NEEDLE SINGLE THREAD OR DOUBLE NEEDLE DOUBLE THREAD.
- WITH OR WITHOUT AUTOMATIC LUBRICATION SYSTEM.
- V-BELT OR TIMING (TOOTHED) BELT.
- DIFFERENT COLOURS LIKE BLUE, RED, WHITE, GREY, SILVER OR ANY COLOUR OF YOUR CHOICE.
- 1500 STITCHES PER MINUTE 6 TO 30 STITCHES PER 25MM.



OVERLOCK MACHINE

- SHEET METAL STAND WITH WOODEN TABLE FITTED WITH A MOTOR
- SEWING MACHINE MOTOR WITH FOOT PEDAL / CONTROLLER (150W & 8000 R.P.M)
- DIFFERENT COLOURS LIKE BLUE HAMMERTONE, GREEN HAMMERTONE, BLACK, GRAY METALLIC, RED METTALLIC, DARK GREEN METALLIC.
- 1500 STITCHES PER MINUTE 6 TO 30 STITCHES PER 25MM.





INDUSTRIAL MACHINE

- BOBBIN WINDER FITTED BEHIND THE WHEEL OR BELOW OF THE BASE PLATE OF MACHINE.
- 1/8 OR 1/12 H.P MOTOR WITH FOOT PEDAL / CONTROLLER.
- FOOT OPERATING SHEET METAL STAND / CAST IRON STAND / Z – TYPE SHEET METAL STAND.
- WOODEN BASE ONLY.
- WOODEN TABLE.
- 1/6 H.P CLUTCH MOTOR.
- 1500 STITCHES PER MINUTE 6 TO 30 STITCHES PER 25MM.



SEWING MACHINE STAND

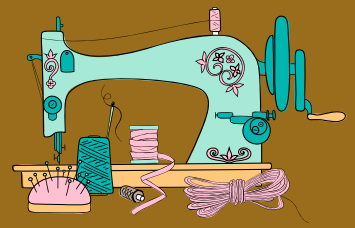
- HEIGHT: 28"
- WIDTH: 24"
- WHEEL SIZE: 17" (CASTING WHEEL)
- NET WEIGHT: 10 KG (APPROX)
- HEAVY DUTY
- FINISHING: POLISHED
- MATERIAL: CAST IRON
- FOOT PLATE: OPENED
- APPLICATION: INDUSTRIAL, DOMESTIC



BOBBIN CASE

- MATERIAL: CARBON STEEL
- USAGE/APPLICATION: SEWING MACHINE
- SHAPE: ROUND
- BRAND: GENERAL





SHUTTLE HOOK

- MATERIAL: CARBON STEEL
- USAGE/APPLICATION: SEWING MACHINE
- MODEL: (A) 2515
- MODEL: (B) DEEP SLOT



TT LEVER

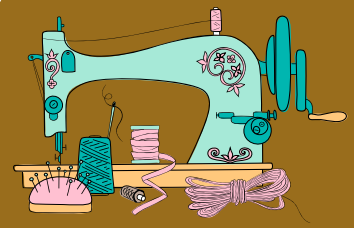
- MATERIAL: CARBON STEEL
- USAGE/APPLICATION: SEWING MACHINE
- BRAND; GENERAL



SHUTTLE RACE

- MATERIAL: CARBON STEEL
- USAGE/APPLICATION: SEWING MACHINE
- SHAPE: ROUND
- BRAND: GENERAL





INDUSTRIAL SEWING MACHINE

- 1/8 OR 1/12 H.P MOTOR WITH FOOT PEDAL / CONTROLLER.
- FOOT OPERATING SHEET METAL STAND / CAST IRON STAND / Z – TYPE SHEET METAL STAND.
- WOODEN BASE ONLY.
- WOODEN TABLE.
- 1/6 H.P CLUTCH MOTOR.
- 1500 STITCHES PER MINUTE 6 TO 30 STITCHES PER 25MM.



SEWING MACHINE TABLE

- SIZE: 16 X 32 | 18 X 36 | 20 X 40
- TYPE: WOODEN / BOARD

